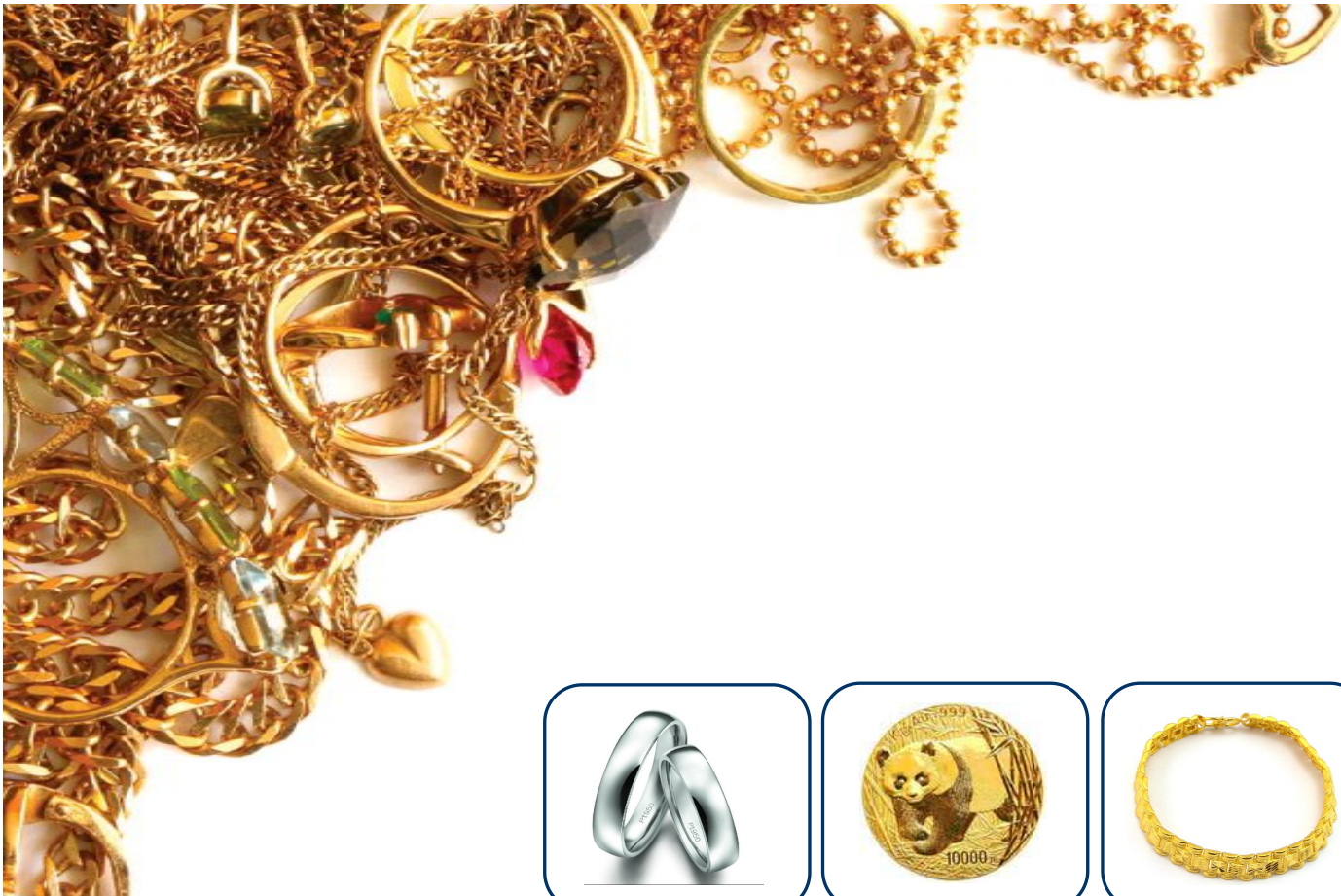
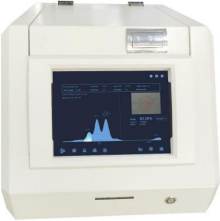





X-Ray Fluorescence Spectrometer



			
CDO-A3	CDO-A5	CDO-K5	CDOS7-SDD

CODCAST INSTRUMENT

XRF gold tester/analyzer is a widely used, proven, and accepted method of chemistry analysis and determination of purity and authenticity of precious metals. Given the current high value of gold, quantifying its fineness and purity is more important than ever. Whether you buy gold, sell or produce jewelry, make metals, or recycle scrap metal, you need a fast, highly accurate method to determine karatage quality control and pricing.

Advantages and Characteristics of CDOCAST Precious Metals Analyzer

1. Integrated an inbuilt computer with high industrial motherboard and multi- point hand touch, you don't need to prepare other computers, it can bring you super smooth experience feelings.
2. Three core components inside the instrument are all imported, so it determines that the instrument can accurately distinguish different gold samples especially 99.9% gold and 99.99% gold.
3. The instruments possess own unique mode of "one-key test" , it is China first and same as Europe's top spectrometers. No matter any unknown metal material, the operators don' t need to choose test templates and software intelligently matches the best way to measure and calculate. They are capable of fast, precise and non-destructive metal testing, making them suitable for use by jewelry retailers, jewelry manufacturers, precious metal refineries, pawn shops, government quality inspection departments, banks, laboratories and tertiary institutions.
4. Super long warranty, confidence comes from pure European spectrometer production technology.
5. The users can see sample test position accurately by camera and cabin lighting system, and

it can improve the testing confidence of users.

6. Equipped with a variety of optical collimator, breakthrough solved test problems of tiny metal samples (such as spun gold and gold thread samples) .
7. We can download and upload test data from network, and it is easy to view and share test results.
8. Temperature drift rate of all the parts inside instrument is controlled within one over one million, ensuring the strong stability and high precision of instrument. Testing results can show 4 digits after the decimal point, beyond all domestic spectral type precious metals analyzer.
9. Ultrahigh resolution, Super clear camera, Super convenient operation, Super fast detection speed, Perfect human interface.
10. Installation & after-sales: all the installation and after sales can be done on the remote control system, that means you just need to connect your tester machine with the computer, our engineer can install ,upgrade, and do the after-sales for you from the remote system, which will make everything convenient for you.
11. Upgrade system: Our program is developed & researched by ourself, we will develop our testing system many time per year, and each time upgrade is free for you the whole life, most of the supplier purchase program in the market, they seldom upgrade the testing system.



CDO-A3 Precious Metal XRF Analyzer (Economic model)

Performance and Configuration:

◆ Analysis Range	1ppm to 99.99%
◆ Accuracy	±0.1~0.2%
◆ Sample Form	Solid, powder, liquid
◆ High Voltage Power Supply	0 ~ 50KV/0~1MA
◆ Detector Type	Gas proportional Detector
◆ Test Time	10sec ~ 100sec
◆ Measuring Element	Au / Ag / Pt / Pd / Cu/ Ir/ Cd (7 elements)
◆ Integrated Computer	Intel SandyBridge highly integrated industrial Motherboard
◆ External Dimensions	410 * 500 * 430 (mm)
◆ Weight	33Kg(Net)/45(Gross)



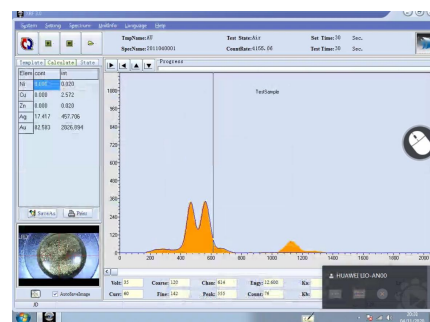
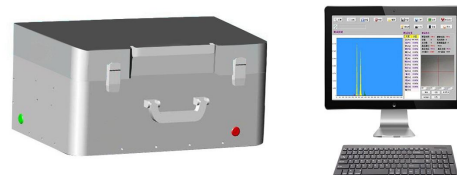
Instruments Environmental Requirements:

- ◆ Ambient Temperature -11~46°C/Humidity ≤70%
 - ◆ Power Requirements AC 220V ± 5V, 50/ 60 Hz
- No high power electromagnetic and vibration interference sources nearby

CDO9000 Precious Metal XRF Analyzer

Performance and Configuration:

◆ Analysis Range	1ppm to 99.99%
◆ Accuracy	±0.1%
◆ Sample Form	Solid, powder, liquid
◆ Tube Voltage	5KV ~ 50KV
◆ High Voltage Power Supply	0 ~ 50KV
◆ Camera	HD camera
◆ Detector Type	Proportional Counter tube
◆ Filters	Selectable customized switches
◆ Multichannel Analyzer	Digital multichannel
◆ Sample Chamber Size	400 * 300 * 65 (mm)
◆ Test Time	10sec ~ 100sec
◆ Measuring Element	Au Ag Pt Pd Cu Ni Zn Rh Cd Ru Fe Co Ir W Os Pb (16 elements)
◆ Analysis Software	Qualitative and quantitative analysis software
◆ External Dimensions	500 * 340 * 230 (mm)
◆ Weight	30Kg



Instruments Environmental Requirements:

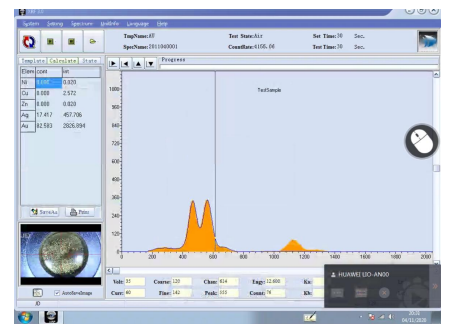
◆ Ambient Temperature	-5 ° C ~ 40 ° C (Suggested that in air conditioning room)
◆ Relative Humidity	15% ~ 90%
◆ Power Requirements	AC 220V ± 5V, 50/ 60 Hz

No high power electromagnetic and vibration interference sources nearby

CDO9500 Precious Metal XRF Analyzer

Performance and Configuration:

◆ Analysis Range	1ppm to 99.99%
◆ Accuracy	±0.05%
◆ Sample Form	Solid, powder, liquid
◆ Tube Voltage	5KV ~ 50KV
◆ High Voltage Power Supply	0 ~ 50KV
◆ Camera	HD camera
◆ Detector Type	Si-Pin detector (Made in USA)
◆ Filters	Selectable customized switches
◆ Multichannel Analyzer	Digital multichannel
◆ Sample Chamber Size	310 * 270 * 80 (mm)
◆ Test Time	10sec ~ 100sec
◆ Measuring Element	All 72 elements from Sodium (Na) to Uranium (U)
◆ Analysis Software	Qualitative and quantitative analysis software
◆ External Dimensions	460 * 390 * 350 (mm)
◆ Weight	48Kg



Instruments Environmental Requirements:

◆ Ambient Temperature	-5 ° C ~ 38 ° C (Suggested that in air conditioning room)
◆ Relative Humidity	15% ~ 90%
◆ Power Requirements	AC 220V ± 5V, 110V ± 10V, 50/ 60 Hz

No high power electromagnetic and vibration interference sources nearby

CDO-A4 XRF Metal Analyzer

Performance and Configuration:

◆ Analysis Range	1ppm to 99.99%
◆ Accuracy	±0.1% (alloy)
◆ Sample Form	Solid, powder, liquid
◆ Light path	Traditional shine obliquely light path
◆ Resolution ratio	145 ±5eV
◆ Detector Type	Si-Pin detector (Economic type)
◆ Test Time	Intelligent one click operation, results can be obtained in 5 seconds
◆ Measuring Element	All 74 elements from Potassium (K) to Uranium (U), 20 kinds of elements can be displayed per time
◆ Collimator	2.5mm
◆ Computer	Built in computer, Dual core + Win 11
◆ Display screen	9.7 inch same touch screen as iPhone
◆ Printing method	Supports thermal printing and A4 printing of reports
◆ External Dimensions	455*345*350 (mm)
◆ Weight	33 Kg



Instruments Environmental Requirements:

◆ Ambient Temperature	-5 ° C ~ 38 ° C (Suggested that in air conditioning room)
◆ Relative Humidity	15% ~ 90%
◆ Power Requirements	100-240VAC, 50 Hz

No high power electromagnetic and vibration interference sources nearby

CDO-K5 XRF Metal Analyzer

Performance and Configuration:

◆ Analysis Range	1ppm to 99.99%
◆ Accuracy	±0.03% (alloy)
◆ Sample Form	Solid, powder, liquid
◆ Light path	Traditional shine obliquely light path
◆ Resolution ratio	145 ±5eV
◆ Detector Type	Si-Pin detector (Made in USA)
◆ Test Time	Intelligent one click operation, results can be obtained in 5 seconds
◆ Measuring Element	All 74 elements from Potassium (K) to Uranium (U), Can display 30 kinds of elements, Supports liquid analysis and can distinguish between seawater pearls and freshwater pearls
◆ Collimator	2.0mm
◆ Computer	Built in computer, i3 Quad core + Win 11
◆ Display screen	9.7 inch same touch screen as iPhone
◆ Printing method	Supports thermal printing and A4 printing of reports
◆ External Dimensions	455*345*350 (mm)
◆ Weight	33 Kg



Instruments Environmental Requirements:

◆ Ambient Temperature	-5 ° C ~ 38 ° C (Suggested that in air conditioning room)
◆ Relative Humidity	15% ~ 90%
◆ Power Requirements	100-240VAC, 50 Hz

No high power electromagnetic and vibration interference sources nearby

CDO-A5 XRF Metal Analyzer

Performance and Configuration:

◆ Analysis Range	1ppm to 99.99%
◆ Accuracy	±0.05% (alloy)
◆ Sample Form	Solid, powder, liquid
◆ Light path	Traditional shine obliquely light path
◆ Resolution ratio	145 ±5eV
◆ Detector Type	Si-Pin detector (Made in USA)
◆ Test Time	Intelligent one click operation, results can be obtained in 5 seconds
◆ Measuring Element	All 74 elements from Potassium (K) to Uranium (U), 30 kinds of elements can be displayed per time
◆ Collimator	2.5mm
◆ Computer	Built in computer, Dual core + Win 11
◆ Display screen	24 inch LCD display
◆ Printing method	Supports thermal printing and A4 printing of reports
◆ External Dimensions	450 * 422 * 378 (mm)
◆ Weight	39 Kg



Instruments Environmental Requirements:

◆ Ambient Temperature	-5 ° C ~ 38 ° C (Suggested that in air conditioning room)
◆ Relative Humidity	15% ~ 90%
◆ Power Requirements	100-240VAC, 50 Hz

No high power electromagnetic and vibration interference sources nearby

CDO-A5S XRF Metal Analyzer

Performance and Configuration:

◆ Analysis Range	1ppm to 99.99%
◆ Accuracy	±0.03% (alloy) ±20 ppm (liquid)
◆ Sample Form	Solid, powder, liquid
◆ Light path	New vertical incidence light path
◆ Resolution ratio	145 ±5eV
◆ Detector Type	Si-Pin detector (Made in USA)
◆ Test Time	Intelligent one click operation, results can be obtained in 5 seconds
◆ Measuring Element	All 74 elements from Potassium (K) to Uranium (U), Can display 30 kinds of elements, Supports liquid analysis and can distinguish between seawater pearls and freshwater pearls
◆ Collimator	2.0mm
◆ Computer	Built in computer, i5 Quad core + Win 11
◆ Display screen	24 inch LCD display
◆ Printing method	Supports thermal printing and A4 printing of reports
◆ External Dimensions	450 * 422 * 378 (mm)
◆ Weight	39 Kg



Instruments Environmental Requirements:

◆ Ambient Temperature	-5 ° C ~ 38 ° C (Suggested that in air conditioning room)
◆ Relative Humidity	15% ~ 90%
◆ Power Requirements	100-240VAC, 50 Hz

No high power electromagnetic and vibration interference sources nearby

CDOA5-SDD XRF Metal Analyzer

Quick Features:

- Customized SDD detector from AMPTEK, United States
- High precision detection, with a detection accuracy of up to 1/10000
- Intel Dual Core Industrial Computer
- One click testing, fast, accurate, and comprehensive
- Large sample testing warehouse
- Light tube overheat protection
- High voltage overvoltage protection
- Install radiation protection devices to actively protect the safety of operators
- Program controlled preheating and anti radiation interference to ensure stable and accurate test results



Performance and Configuration:

Working Principle	Energy Dispersive X-ray Fluorescence
Precision	±0.01%(999 gold)
Collimator	φ2.5mm
Operating Environment	Temperature 15-31 °C Humidity ≤70%
Sample Form	Solid, powder, liquid
Detector	AMPTEK Customized-SDD (Made in USA)
High voltage	50KV/1mA Digital high voltage
Testable Elements	All elements from K(No.19)~U(No.92)
Inbuilt Computer	Intel Dual Core Industrial Computer
Actual Focus point	φ 0.5mm
Input Voltage	AC100 – 240V, 50Hz
Rated Power	<150W
Instrument dimension(mm)	450 x 422 x 378
Testing chamber dimension (mm)	300 x 300 x 100
N/G Weight(KG)	39/45

CDO-S7-SDD Portable Metal Analyzer (High configuration)

Quick Features:

- CDO-S7 SDD is one of the latest version of precious metal detector in CDOCAST, which has high appearance design. The operation is simple, fast and intuitive.
- Automatic switching of multiple collimators and multiple filters, accurately detect samples of various shapes and specifications. It can detect the inner side of the ring.
- In built NXP IMX8 quad-core+ Linux kernel, effectively resist Trojan and virus software.
- Auto compensates the test distance.
- Lead(Pb) glass to guarantee 100% human safe.
- The software focus on the test height of the sample, and the algorithm compensates the test distance.
- Supporting “continuous automatic test of 10 positions turntable ” optional.



Performance and Configuration:

Working Principle	Energy Dispersive X-ray Fluorescence
Precision	±0.01%(999 gold)
Collimator	φ0.5/ φ1/ φ2 mm auto switch
Operating Environment	Temperature 15-31 °C Humidity ≤70%
Integrated X-Ray Generator	50KV/1MA , Target; W
Detector	Fast-SDD (Made in USA)
Resolution	125±3 ev
Testable Elements	All elements from Al(No.13)~U(No.92)
Inbuilt Computer	NXP IMX8 computer with Linux kernel
Inbuilt Touch Screen	Integrated 9.7-inch IPS display + capacitive touchscreen
Input Voltage	AC100 – 240V, 50Hz
Rated Power	<150W
Instrument dimension(mm)	455 x 345 x 350
Testing chamber dimension (mm)	306 x 248 x 124
N/G Weight(KG)	32/40