

SMALL UPWARD CONTINUOUS CASTING MACHINE



Details



Operation panel



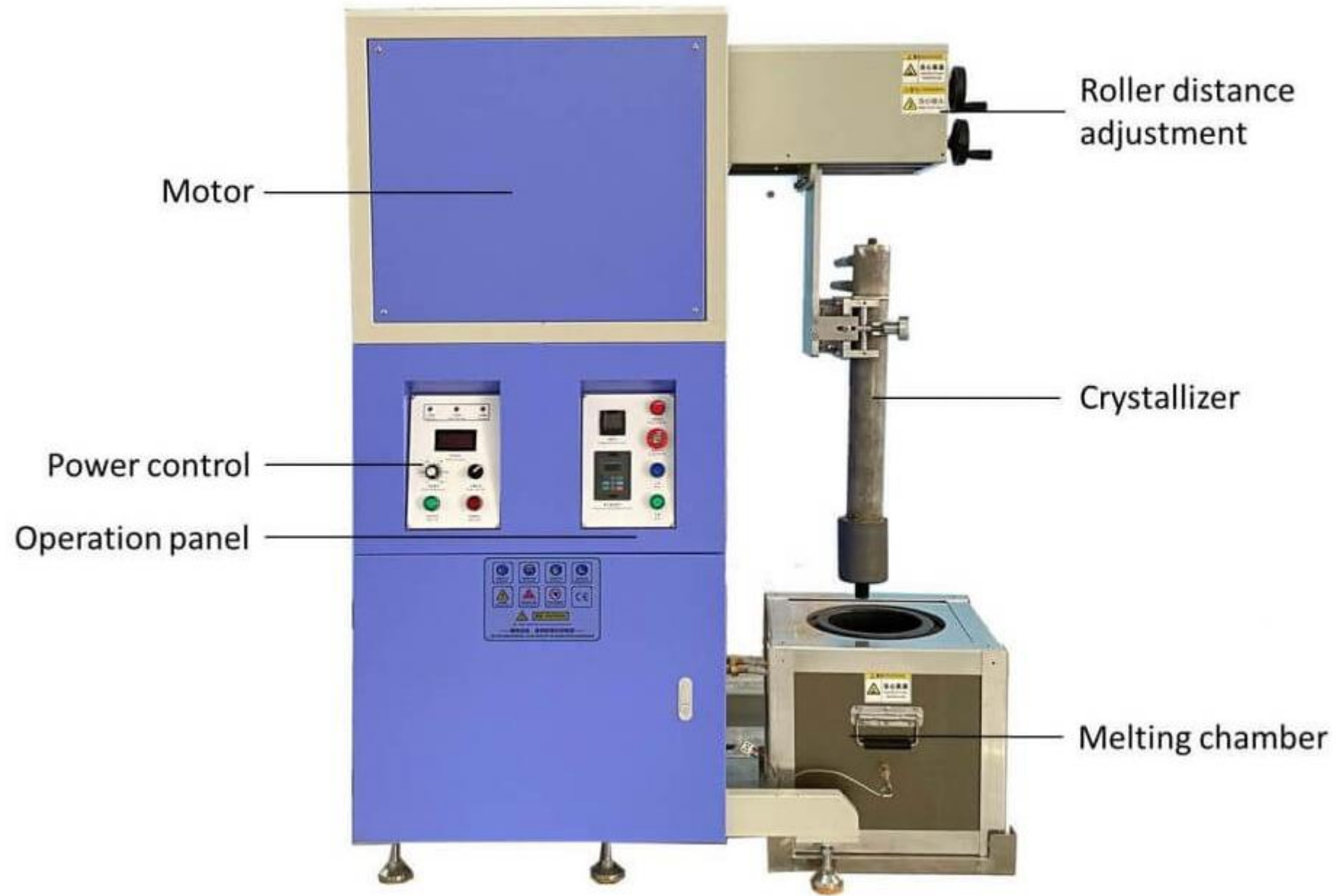
Temperature controlled wire

Stretching speed adjustment

SMALL UPWARD CONTINUOUS CASTING MACHINE



Details





Servo Motor

Operation panel

Indicator Light

Temperature Control



Power Panel

Traction Speed Regulation

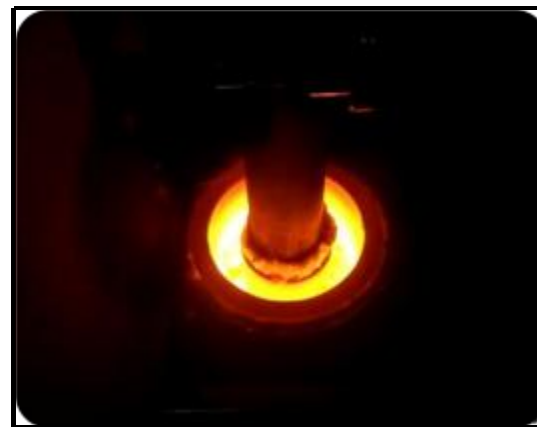
Parameter

Model number	CDO-UP45	CDO-UP70
Voltage	3P, 380V, 50/60Hz	3P, 380V, 50/60Hz
Power	45kw	70kw
Application metal	Gold, K-Gold, Silver, Copper, Brass, Bronze, and their alloys	
Max temperature	1600°C	1600°C
Temperature control range	0-1300°C	0-1300°C
Melting time	30 minutes	40 minutes
Drawing speed	1000mm per minute	1000mm per minute
Cast scope	Metals Rods, Pipes, Plates, Wires	
Dimensions	1200*630*1500mm	1200*630*1500mm
Weight	400kg	450kg

Features

1. Whole melting process is protected with argon gas to prevent metal oxidation, twisting forced casting method.
2. Quick melting and casting, suitable for K-gold, silver, tube, slice, bar and other shapes.
3. Upward continuous casting is 4 times downward continuous casting.
4. Unique induction heating with automatic stirring function to strengthen the power, even to make color items, big casting capacity to improve your production efficiency.
5. Accurate temperature control to make a perfect condition for casting.
6. Various self error detect system to provide you a safe casting process.
7. Hydraulic cutter is for option.

Application



www.cdcast.com

CDOCAST MACHINERY CO., LTD.

Skype: mandymeina Email: sales@cdcast.com
Tel: +86-15168765707 Website: www.cdcast.com