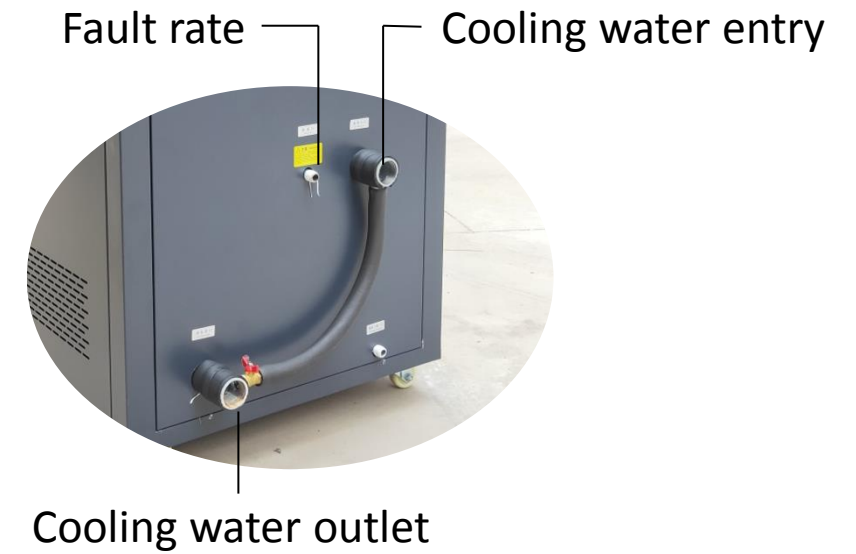
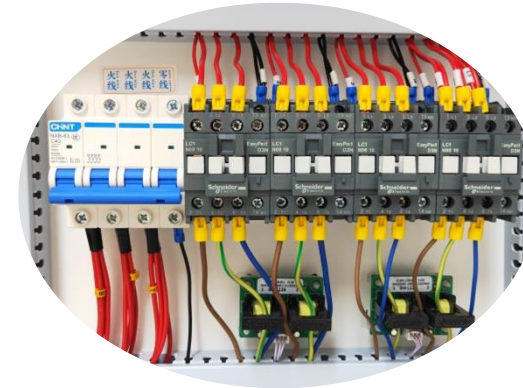
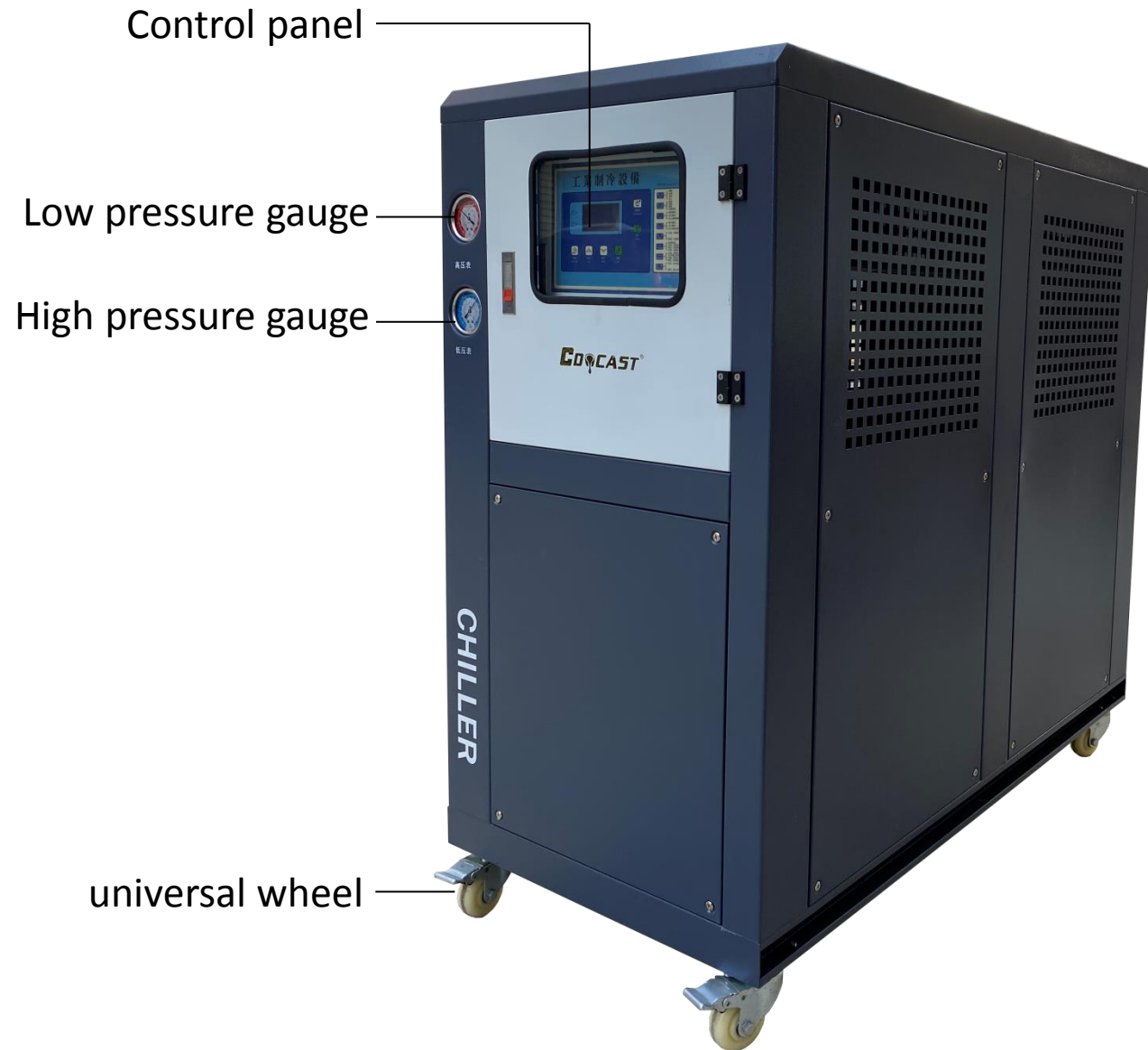


# WATER CHILLER



# Details



# Industrial Chiller



# Parameter

Model number	CDO-W3P	CDO-W5P	CDO-W8P	CDO-W10P	CDO-W15P	CDO-W20P
Voltage	3P, 380V, 50/60Hz					
Refrigerating capacity	7146 Kcal/h	11910 Kcal/h	19056 Kcal/h	23820 Kcal/h	35730 Kcal/h	47640 Kcal/h
Refrigerating machine power	8.1KW	13.5KW	21.6KW	27KW	40.5KW	54KW
Compressor power	2.25KW*1	3.75KW*1	3.0KW*2	3.75KW*2	3.75KW*3	7.5KW*2
Air volume	3150M <sup>3</sup> /h	4235M <sup>3</sup> /h	8250M <sup>3</sup> /h	8250M <sup>3</sup> /h	10600M <sup>3</sup> /h	10600M <sup>3</sup> /h
Condenser power	0.15KW*2	0.45KW*2	0.46KW*2	0.46KW*2	0.7KW*2	0.55KW*3
Cooling water pipe diameter	25DN	25DN	50DN	50DN	50DN	63DN
Cooling water flow	100L/min	100L/min	200L/min	200L/min	200L/min	650L/min
Water tank capacity	52L	52L	130L	130L	150L	150L
Pump power	0.375KW	0.375KW	0.75KW	0.75KW	1.1KW	2.25KW
hydraulic head	18M	16M	16M	16M	18M	19M
weight	150KG	180KG	320KG	320KG	460KG	630KG
Overall dimensions(CM)	105*50*99	118*58*106	150*80*145	150*80*145	172*86*150	200*90*175